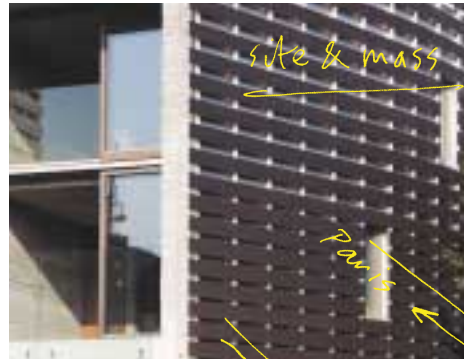


Solid Space

Apartment building

de Rijke Marsh Morgan Ltd
Architects



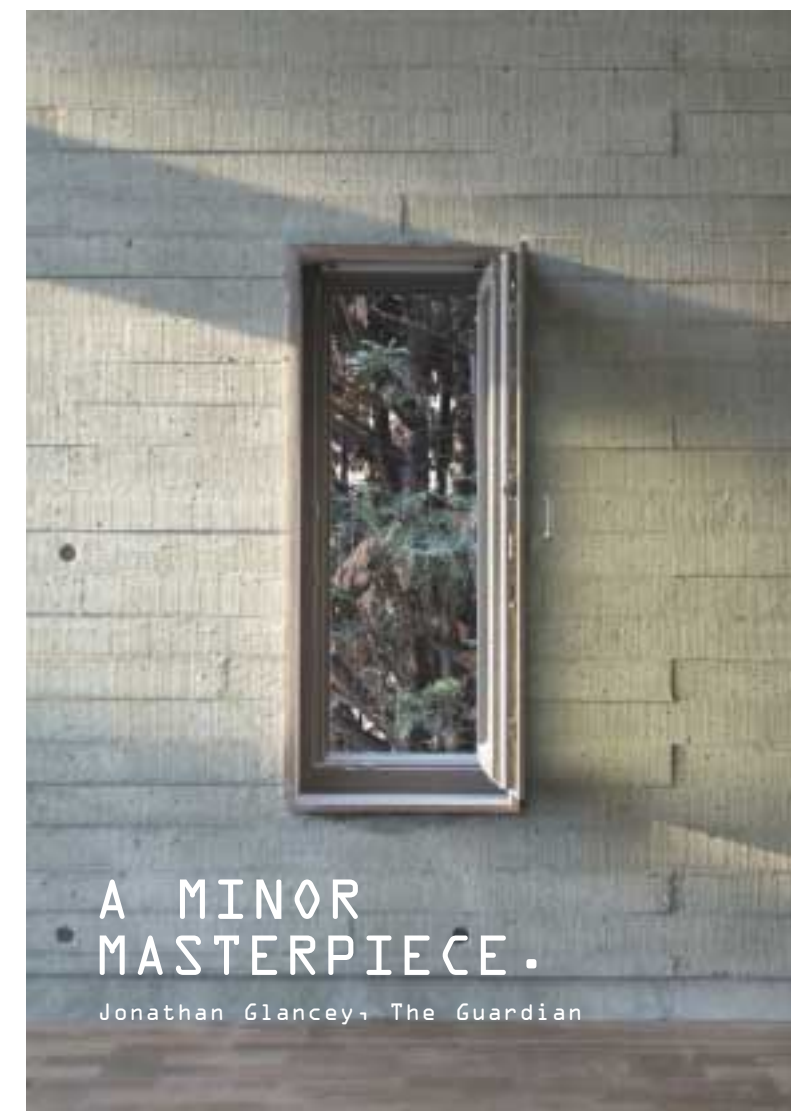
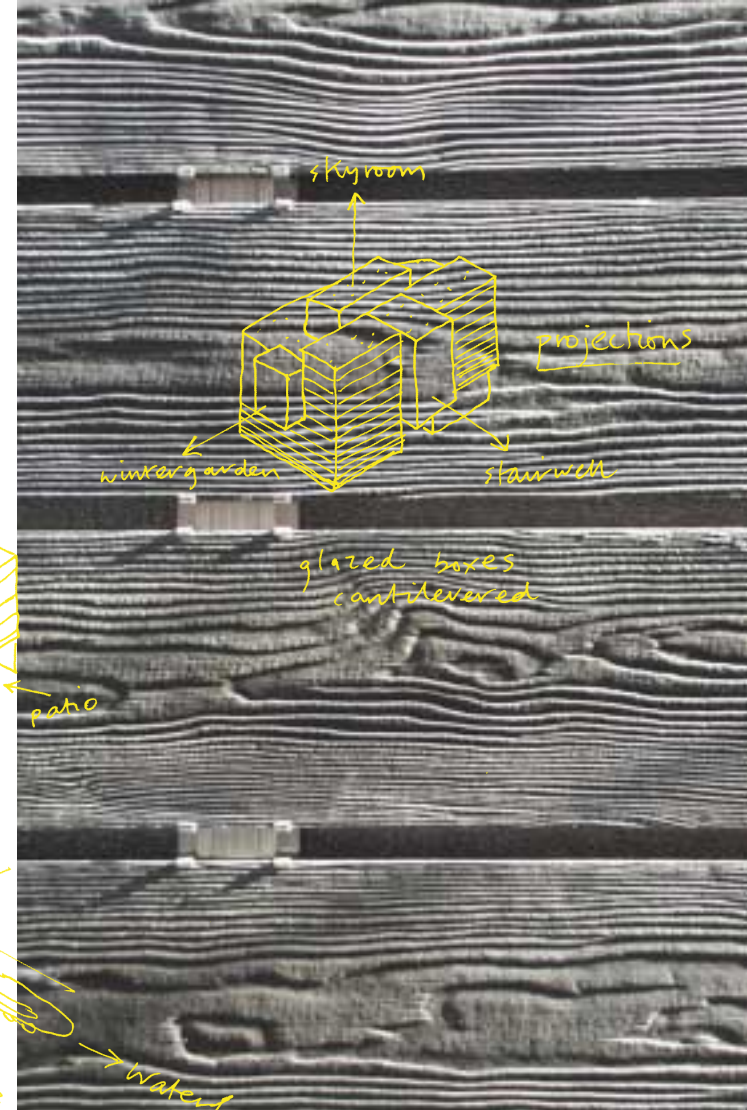
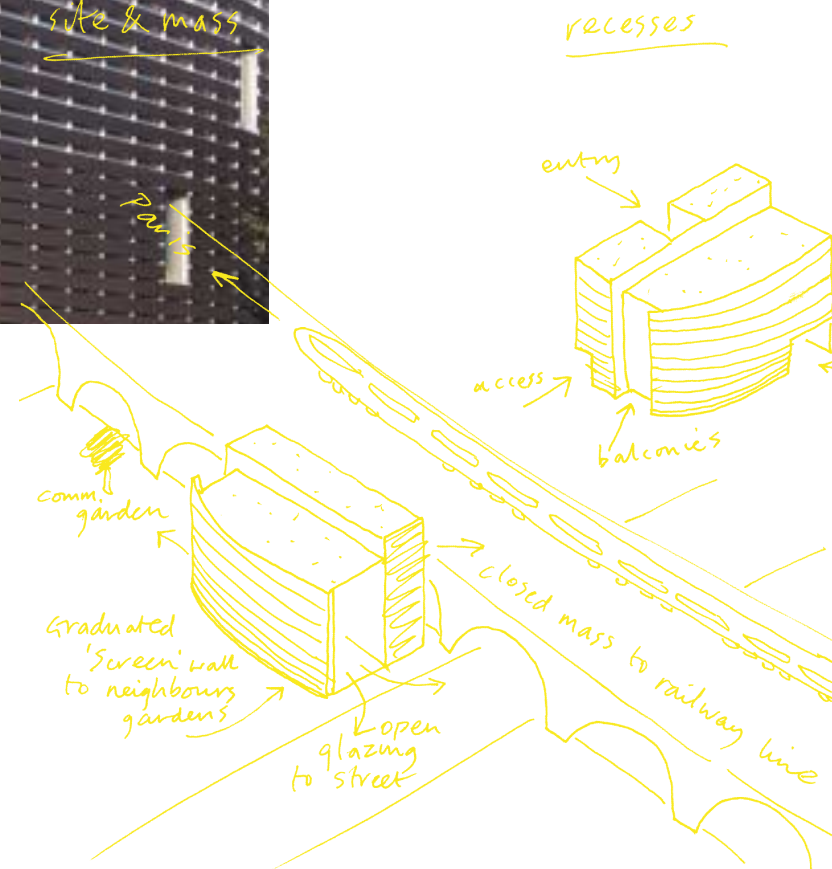
NO ONE CENTAUR STREET LONDON

AN APARTMENT BUILDING
WHOSE COMPONENTS,
OTHER THAN IN SITE
CONCRETE, ARE ALL
PREFABRICATED,
SPECIFIED FROM
INTERNATIONAL SOURCES
ACCORDING TO DRMM'S
CATALOGUE DESIGN
METHODOLOGY.

An apartment building situated 30cm from the Euro star viaduct may seem unlikely, but Lake Estates commissioned dRMM to design one based on an idea for a new housing typology for brown field sites in London, a hybrid of the European horizontal apartment and the English vertical terrace house. Each apartment enjoys a generous interior organised as a large, open double-height living space, interpenetrated by adjacent enclosed bedrooms and stairs, which form a concrete buffer to the railway. Construction consists internally of high exposed concrete economically over clad externally with insulated rain screen. Other than in site concrete, all components are prefabricated, specified from international sources according to dRMM's catalogue design methodology.

It has won the following awards:
Mies van der Rohe Awards short-listing, 2005
Design excellence award, AIA London, 2004
Civic Trust Award, 2004
'London Building of the Year', RIBA, 2003
First Building Award, AJ, 2003
Housing Award, RIBA, 2003
London Regional Award, RIBA, 2003
Building for Life Award, CABE, 2003

This page clockwise from top: Waterloo sunset. An open construction (M. Mack). Modelling concept sketch. Concrete 'wood' cladding. Wintergarden. Wood view. Kitchen in a box. Reverse: no. one Centaur Street from communal garden (M. Mack). All images by dRMM except those by M. Mack.



A MINOR
MASTERPIECE.

Jonathan Glancey, The Guardian

DESIGN BY BORN / BORNDESIGN.COM

Solid Space

Apartment building

de Rijke Marsh Morgan Ltd
Architects

